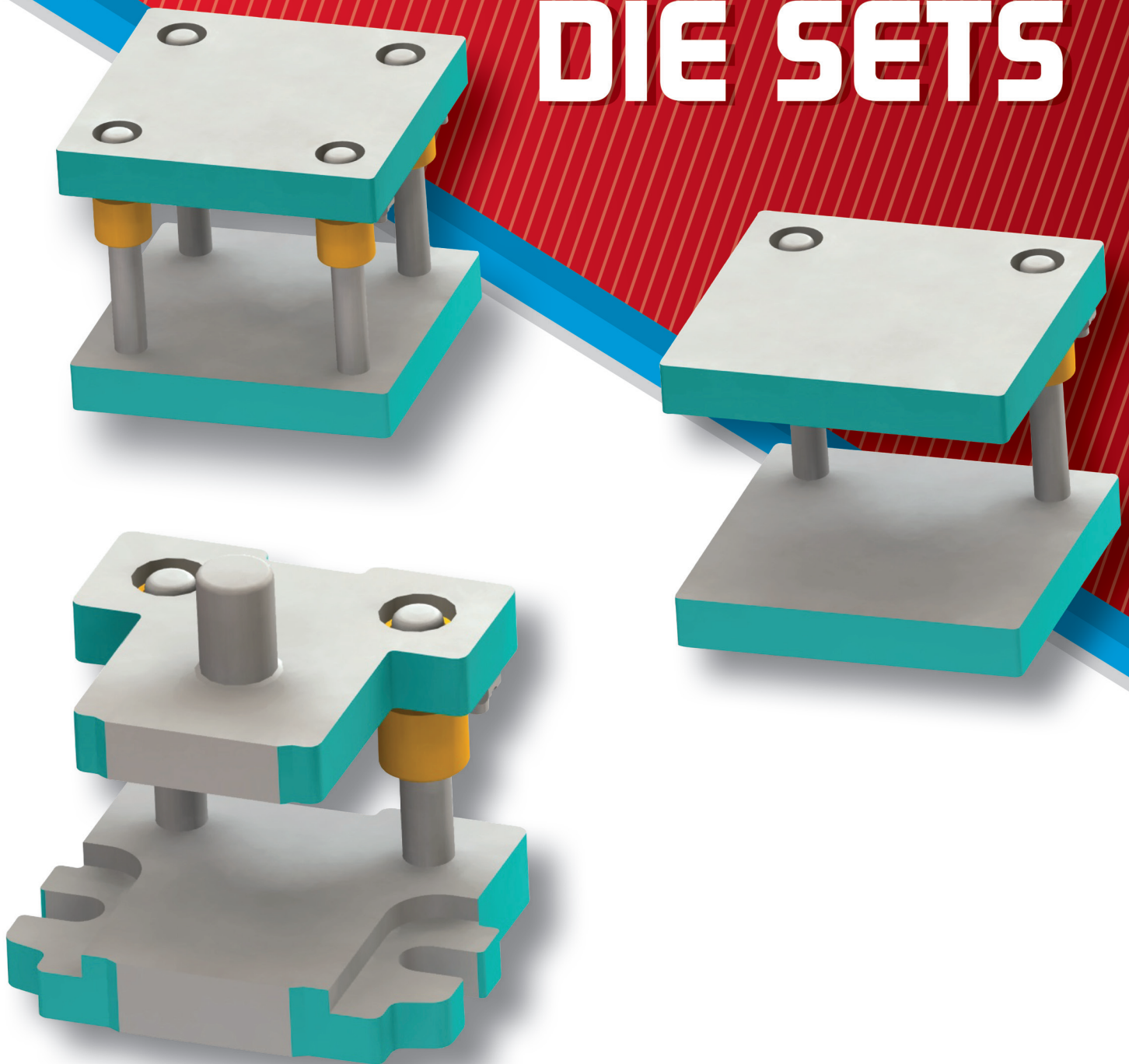
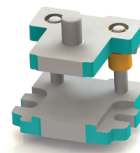




STOCK DIE SETS





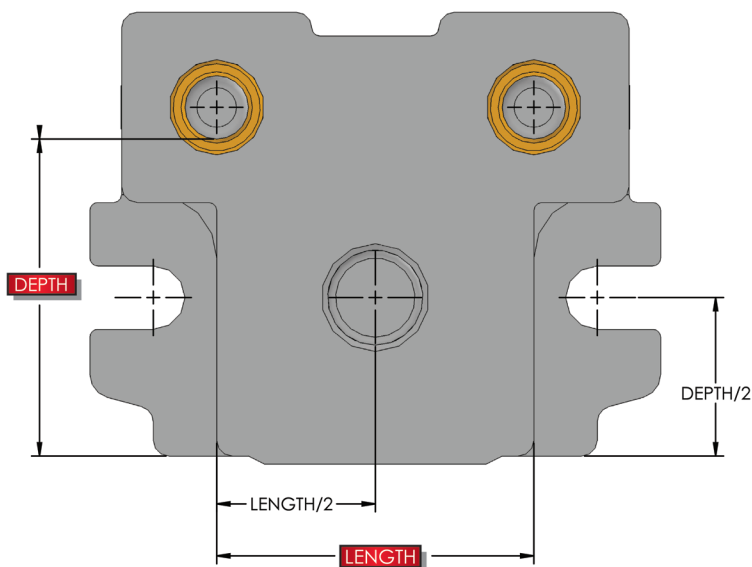
S1 - STYLE 20B

Superior Style 20B Stock Die Sets are available in a wide range of work area dimensions, punch holder and die shoe thicknesses, guide pin and bushing options. Style 20B Stock Die Sets are available with only bolt slot flanges and removable shanks (see page 5340).

WHEN ORDERING PLEASE SPECIFY:

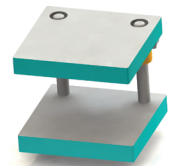
1. Style 20B
2. Quantity
3. Catalog Number
4. Pin Length
5. Bushing Length (1", 2" or 3")
Bushing Material (Steel, Bronze or Bronze-Rite™)
6. Shank Size (See page 5340)

NOTE: For FULL Die Set Specifications
See page 1030 in the Die Set Catalog



WORK		THICKNESS		PIN DIA	CATALOG NUMBER
DEPTH	LENGTH	PH	DS		
4	4	1 1/4	1 1/2	1	S1-0404-12
4	5	1 1/4	1 1/2	1	S1-0405-12
4	6	1 1/4	1 1/2	1	S1-0406-12
4	8	1 1/4	1 1/2	1	S1-0408-12
5	5	1 1/4	1 1/2	1	S1-0505-12
5	6	1 1/4	1 1/2	1	S1-0506-12
5	7	1 1/4	1 1/2	1	S1-0507-12
5	10	1 1/2	1 1/2	1 1/4	S1-0510-22
6	6	1 1/4	1 1/2	1	S1-0606-12
6	6	1 1/4	1 3/4	1	S1-0606-13
6	6	1 1/2	1 1/2	1	S1-0606-22
6	6	1 1/2	1 3/4	1	S1-0606-23
6	8	1 1/4	1 1/2	1 1/4	S1-0608-12
6	12	1 1/4	1 1/2	1 1/4	S1-0612-12

WORK		THICKNESS		PIN DIA	CATALOG NUMBER
DEPTH	LENGTH	PH	DS		
7	7	1 1/4	1 1/2	1 1/4	S1-0707-12
7	10	1 1/4	1 1/2	1 1/4	S1-0710-12
8	8	1 1/4	1 1/2	1 1/4	S1-0808-12
8	8	1 1/4	1 3/4	1 1/4	S1-0808-13
8	8	1 1/2	1 1/2	1 1/4	S1-0808-22
8	8	1 1/2	1 3/4	1 1/4	S1-0808-23
10	10	1 1/4	1 1/2	1 1/4	S1-1010-12
10	10	1 1/4	1 3/4	1 1/4	S1-1010-13
10	10	1 1/2	1 1/2	1 1/4	S1-1010-22
10	10	1 1/2	1 3/4	1 1/4	S1-1010-23



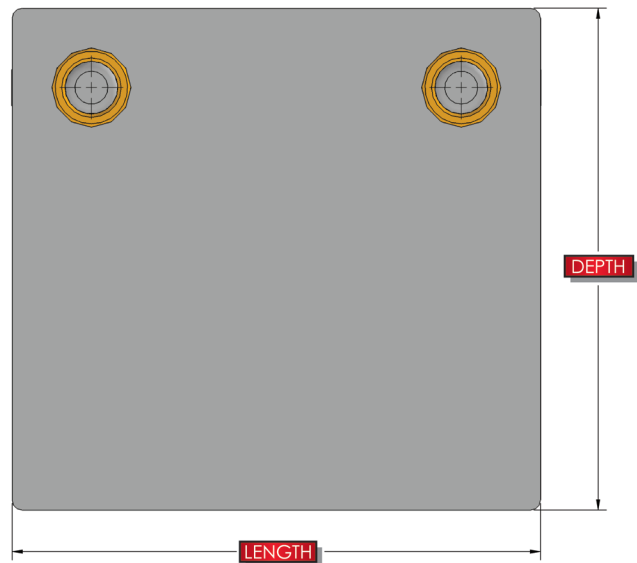
S2 - STYLE 25

Superior Style 25 Stock Die Sets are available in a two pin back post design. These die sets are also offered in a wide choice of overall dimensions, punch holder and die shoe thicknesses, guide pin and bushing options. Style 25 Stock Die Sets are furnished without a shank.

WHEN ORDERING PLEASE SPECIFY:

1. Style 25
2. Quantity
3. Catalog Number
4. Pin Length
5. Bushing Length (1", 2" or 3")
 Bushing Material (Steel, Bronze
 or Bronze-Rite™)

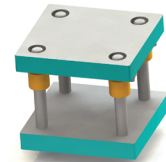
NOTE: For FULL Die Set Specifications
 See page 1050 in the Die Set Catalog



OVERALL		THICKNESS		PIN DIA	CATALOG NUMBER
DEPTH	LENGTH	PH	DS		
8	8	1 1/4	1 1/4	1 1/4	S2-0808-11
8	8	1 1/4	1 1/2	1 1/4	S2-0808-12
8	8	1 1/2	1 1/4	1 1/4	S2-0808-21
8	8	1 1/2	1 1/2	1 1/4	S2-0808-22
8	10	1 1/4	1 1/4	1 1/4	S2-0810-11
8	10	1 1/4	1 1/2	1 1/4	S2-0810-12
8	10	1 1/4	1 3/4	1 1/4	S2-0810-13
8	10	1 1/2	1 1/4	1 1/4	S2-0810-21
8	10	1 1/2	1 1/2	1 1/4	S2-0810-22
8	10	1 1/2	1 3/4	1 1/4	S2-0810-23
8	12	1 1/2	1 1/2	1 1/2	S2-0812-22
10	10	1 1/4	1 1/2	1 1/4	S2-1010-12
10	10	1 1/4	1 3/4	1 1/4	S2-1010-13
10	10	1 1/2	1 1/2	1 1/4	S2-1010-22
10	10	1 1/2	1 3/4	1 1/4	S2-1010-23
10	12	1 1/4	1 1/2	1 1/2	S2-1012-12
10	12	1 1/4	1 3/4	1 1/2	S2-1012-13
10	12	1 1/2	1 1/2	1 1/2	S2-1012-22
10	12	1 1/2	1 3/4	1 1/2	S2-1012-23
10	12	1 3/4	1 1/2	1 1/2	S2-1012-32
10	12	1 3/4	1 3/4	1 1/2	S2-1012-33

OVERALL		THICKNESS		PIN DIA	CATALOG NUMBER
DEPTH	LENGTH	PH	DS		
10	14	1 1/2	1 1/2	1 1/2	S2-1014-22
10	16	1 1/2	1 1/2	1 1/2	S2-1016-22
12	12	1 1/2	1 1/2	1 1/2	S2-1212-22
12	12	1 1/2	1 3/4	1 1/2	S2-1212-23
12	12	1 1/2	2	1 1/2	S2-1212-24
12	12	1 3/4	1 1/2	1 1/2	S2-1212-32
12	12	1 3/4	1 3/4	1 1/2	S2-1212-33
12	12	1 3/4	2	1 1/2	S2-1212-34
12	12	2	1 1/2	1 1/2	S2-1212-42
12	12	2	1 3/4	1 1/2	S2-1212-43
12	12	2	2	1 1/2	S2-1212-44
12	14	1 1/2	1 1/2	1 1/2	S2-1214-22
12	16	1 1/2	1 1/2	1 1/2	S2-1216-22
8	10	1 1/4	1 1/2	1 1/4	S2F0810-12
8	10	1 1/2	1 1/2	1 1/4	S2F0810-22
10	10	1 1/4	1 1/2	1 1/4	S2F1010-12
10	10	1 1/2	1 1/2	1 1/4	S2F1010-22
10	12	1 1/2	1 1/2	1 1/2	S2F1012-22
12	12	1 1/2	1 1/2	1 1/2	S2F1212-22
12	14	1 1/2	1 1/2	1 1/2	S2F1214-22
12	14	1 1/2	1 3/4	1 1/2	S2F1214-23

These sizes manufactured from Fortal®



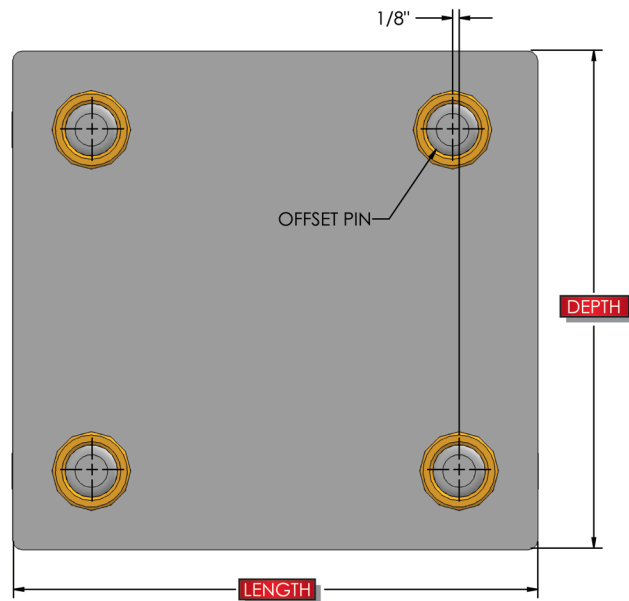
S4 - STYLE 75

Superior Style 75 Stock Die Sets are four pin sets designed for applications where multi-directional or unequal tooling forces are generated by non-symmetrical die shape or heavy stock. The four pin arrangement provides maximum resistance to side thrust and misalignment. On Style 75 Stock Die Sets, the right rear pin is offset 1/8" to left direction to prevent reversing of the punch holder during assembly. Left to right feed (System LR) bushing clamp location is standard on Style 75 Stock Die Sets. Style 75 Stock Die Sets are furnished without a shank.

WHEN ORDERING PLEASE SPECIFY:

1. Style 75
2. Quantity
3. Catalog Number
4. Pin Length
5. Bushing Length (1", 2" or 3")
 Bushing Material (Steel, Bronze
 or Bronze-Rite™)

NOTE: For FULL Die Set Specifications
 See page 1090 in the Die Set Catalog



OVERALL		THICKNESS		PIN DIA	CATALOG NUMBER
DEPTH	LENGTH	PH	DS		
10	10	1 1/4	1 1/2	1 1/4	S4-1010-12
10	12	1 1/4	1 1/2	1 1/2	S4-1012-12
10	14	1 1/2	1 1/2	1 1/2	S4-1014-22
10	16	1 1/2	1 1/2	1 1/2	S4-1016-22
12	12	1 1/2	1 1/2	1 1/2	S4-1212-22
12	14	1 1/2	1 1/2	1 1/2	S4-1214-22
12	16	1 1/2	1 1/2	1 1/2	S4-1216-22
12	18	1 1/2	1 1/2	1 1/2	S4-1218-22
14	14	1 1/2	1 1/2	1 1/2	S4-1414-22
14	16	1 1/2	1 1/2	1 1/2	S4-1416-22
14	18	1 1/2	1 1/2	1 1/2	S4-1418-22



900 West Drexel Avenue
 Oak Creek, WI 53154

Phone (800) 558-6040
 FAX (800) 657-0855

www.superiordieset.com
messages@superiordieset.com